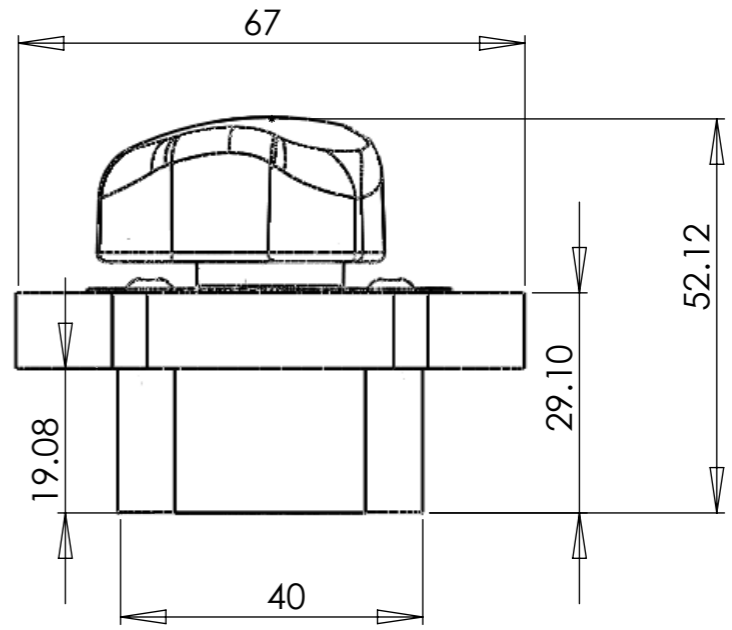
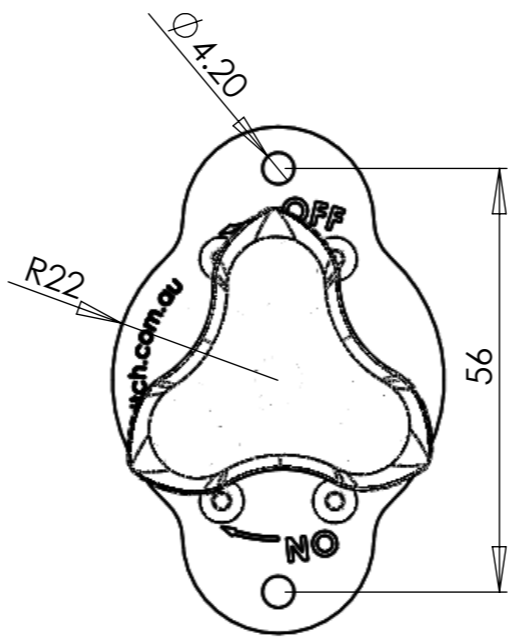


1 2 3 4 5 6

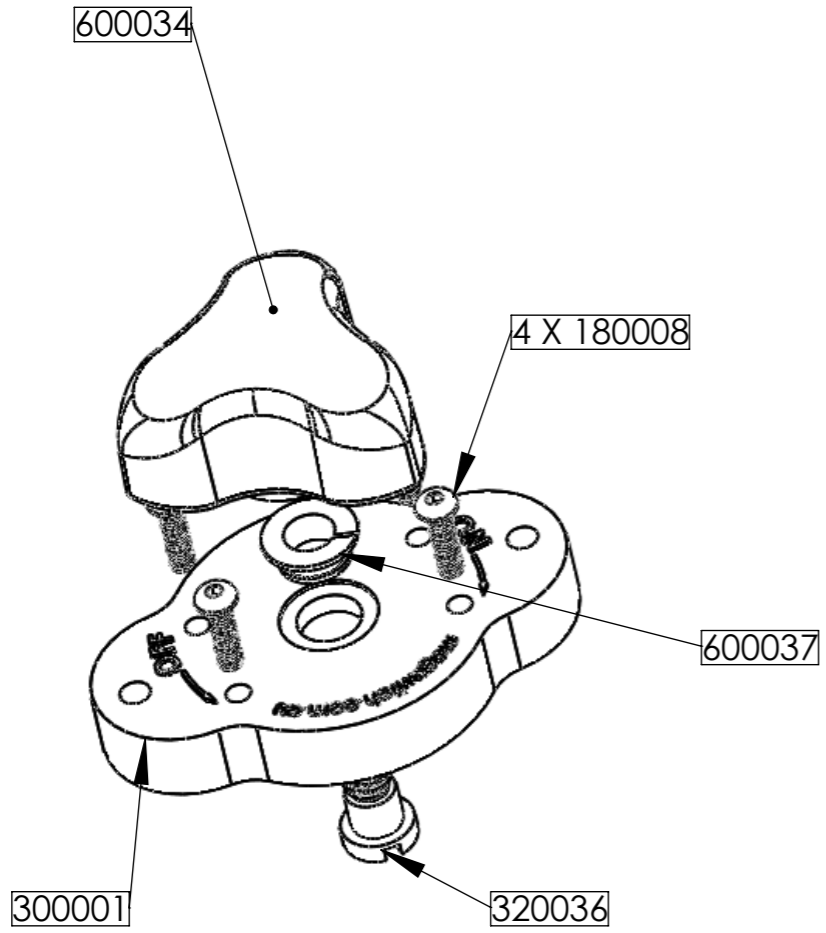
A

A



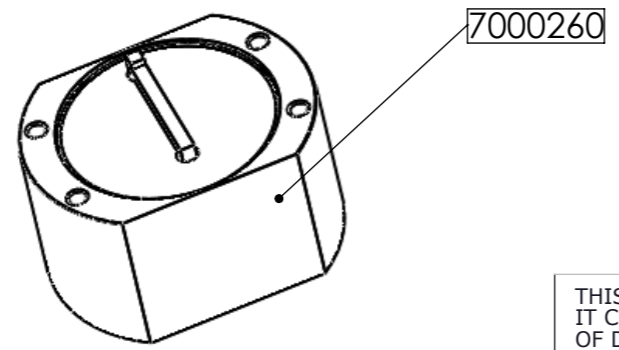
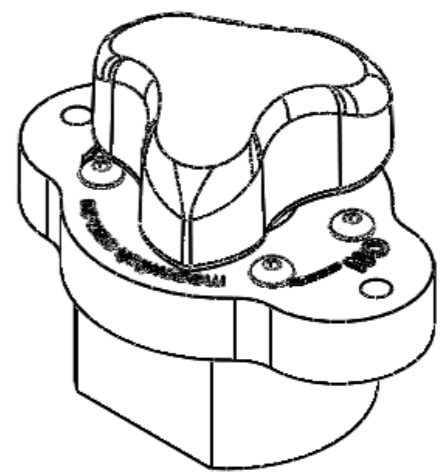
B

B



C

C

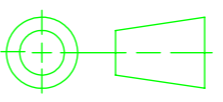


- 1.) TORQUE SCREWS TO 10+-2 IN-LB
- 2.) APPLY LOCKTITE 222 OR USE PREAPPLIED SCREWS
- 3.) TORQUE KNOB TO 20 +- 2 IN-LB
- 4.) VERIFY ACTUATION DIRECTION MATCHES ARROWS

D

D

THIS DOCUMENT, AND THE INFORMATION IT CONTAINS, INCLUDING THE PRINCIPLES OF DESIGN, IS THE EXCLUSIVE PROPERTY OF MAGSWITCH TECHNOLOGY WORLDWIDE AND IS CONFIDENTIAL. ACCORDINGLY, THIS INFORMATION IS SUBMITTED TO YOU WITH THE AGREEMENT THAT IT IS NOT TO BE REPRODUCED, COPIED, OR LOANED IN PART OR IN WHOLE, NOR IS THE INFORMATION TO BE RELAYED TO ANY OTHER INDIVIDUAL OR COMPANY EXCEPT AS MTW FIRST AUTHORIZES IN WRITING. ACCEPTANCE OF THIS DOCUMENT CONSTITUTES AGREEMENT TO THESE RESTRICTIONS.

INTERPRET DRAWING PER: ANSI Y14.5M-1994	DRAWN N. Schottler 9-21-10	DATE 9-21-10
DIMENSIONS ARE IN MILLIMETERS	DESIGN	DATE
 THIRD ANGLE PROJECTION DO NOT SCALE	STD. CHECK	DATE
	F/F CHECK	DATE
	APPROVED	DATE

		621 SOUTHPARK DRIVE, UNIT 1900 LITTLETON, COLORADO 80120 303-468-0662 / FAX 303-690-8144	
TITLE: <b>30mm MagJig Assembled</b>			
SIZE <b>B</b>	CAGE CODE	DWG. NO. <b>8000005</b>	REV <b>1</b>
SCALE 1:1		WEIGHT: 232.90 g	SHEET 1 OF 1

1 2 3 4 5 6