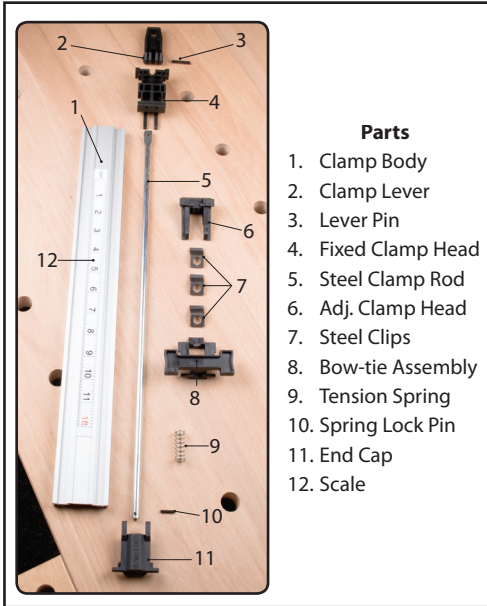


Removing The Adjustable Clamp Head

These Instructions are for basic maintenance for your PRO-GRIP™ Straight Edge Clamps.



Step 1



Make sure handle is in the up-right and unlocked position.

Step 2



While firmly holding clamp, push the end cap out, up and off of the clamp body.

Note: end cap is under spring tension

Step 3



Slide the entire clamping assembly and steel clamp rod from the clamp body.

Step 4



Place the steel rod clamp rod on a scrap piece of stock and with a center punch, remove the pin on the round end of the steel clamp rod.

Step 5



After the pin is removed, slide the spring and the adjustable head assembly off of the steel clamp rod.

Step 6



Once off the rod, dis-assemble the adjustable head assembly by lifting the adjustable clamp head up and sliding it out.

Step 7



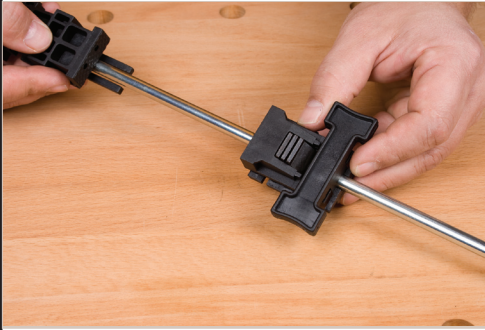
Re-assemble the adjustable head assembly - slide the adjustable clamp head back into the bow-tie assembly.

Step 8



Stack the three clips together, place them into the adjustable head assembly. Small foot of the clips must be facing up to the clamp pad side.

Step 9



With the three clips installed, slide the adjustable clamp assembly on to the steel rod.

Step 10



Slide the spring on the steel clamp rod.

Step 11



Place the steel clamp rod on a scrap piece of stock. Tap the pin back into the steel clamp rod.
Note: Pin should be spaced equally on both sides.

Step 12



Slide the entire assembly back into the clamp body.

Step 13



Make sure handle is in the upright and unlocked position.

Step 14



Slide the spring to the end of the clamping rod against the pin. Place the cut out end of the end cap onto rod behind spring.

Step 15



While firmly holding clamp, push the end cap out, down and snap the end cap back into place.
Note: end cap is under spring tension

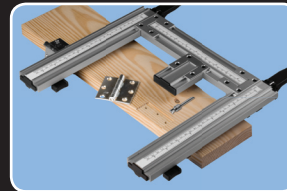
PRO-GRIP™ ACCESSORIES

available at www.ptreeusa.com

90° Head 569



Hinge Mate 584



Wide Jaws 588



Large Handle 576



Drill Guide Kit 602



Saw Plate 565

