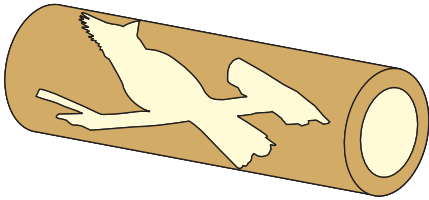


# Cardinal Inlay Kit Instructions



## Kit components

- 1: 1 x Barrel with laser cutout
- 2: 2 x Red Cardinal laser cutout pieces
- 3: 1 x Beak section laser cutout
- 4: 1 x Brown laser cut stem



Barrel



Bird inlay parts



Beak & Eye Inlay



Brown stem

### Step 1:

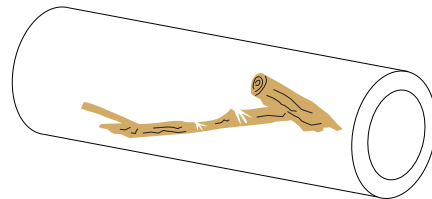
Remove all components from the plastic bag and place on a clean work surface. Please note that the components are small and you can lose them quite easily.

### Step 2:

Take the barrel with the laser cutout and slide the brass tube (27/64) into it. **Please do not use any glue** at this stage, this is only to assist you with the assembly process.

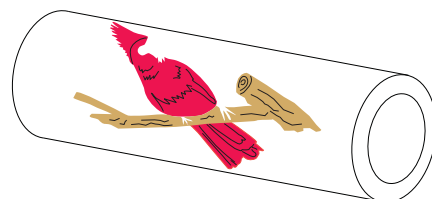
### Step 3:

Take the Brown Stem/ Branch laser cutout and place in into the corresponding cutout. Please note that the branch/Stem might break during assembly.



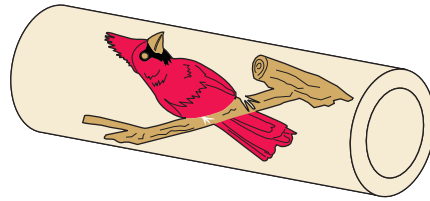
### Step 4:

Take the cardinal body and tail section next and place in the corresponding openings. There is no particular order for the placement of inlays.



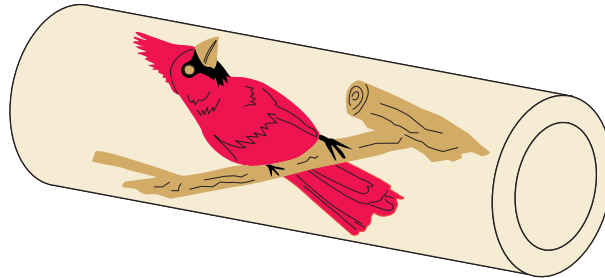
## Step 5

Take the Beak and eye sections and place them in their corresponding openings, the order of placement is not important. The feet has no laser inlays and can be filled with black wood dust/epoxy.



## Step 6

Remove the brass tube and put a small drop of thin CA on each inserted part. Try to keep the CA glue to the edges of the inlaid pieces so you can fill the laser cut lines with dark wood dust for contrast before you finish the pen.



## Step 8

Now you can trim / cut / sand the barrel to size and glue the brass tube into the barrel with a glue of your choice and please give it enough time to dry before turning the barrel into shape. Try to sand the barrel round and smooth before you use a skew or any other tool to finish your pen.